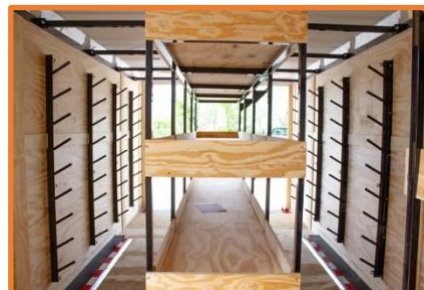




## 8.5 X 20 PRO SERIES ENCLOSED TRAILER – HOT STICK

### SPECIFICATIONS

- GVWR (lbs) – 16,000
- GAWR (lbs/axle) – 8,000
- Payload (lbs) – 8,600
- Curb Weight (lbs) – 7,400
- Overall Length – 25'
- Interior Height – 83.75"
- Nose Plate coupler with Pintle
- True 8k Slipper Oil Bath Axle Upgrade
- 12k Heavy Duty Jack
- Dual Rear door
- ¾" Treated Plywood Flooring
- ¾" Plywood Walls
- Insulated
- Tire Upgrade
- 6 Pole Round Pin Plug
- 20 Amp Motor Base Plug



### ADD-ONS

- Center Tooling Rack
- Front Tooling Rack
- Chain Storage Rack
- Hot Stick Rack Arms
- 1500-Watt Heater, 120v
- 8" Recessed 120v Lighting
- Wall Mounted Switch
- Fold-Down Two-Tier Steps, 29" wide
- 6" Additional Height



9138 BLUFFTON ROAD FORT WAYNE, IN 46809

WWW.RENTPTR.COM

SALES@RENTPTR.COM

844.644.9138